

# **LINUX IXP Update @ RIPE57**

Mike Hughes

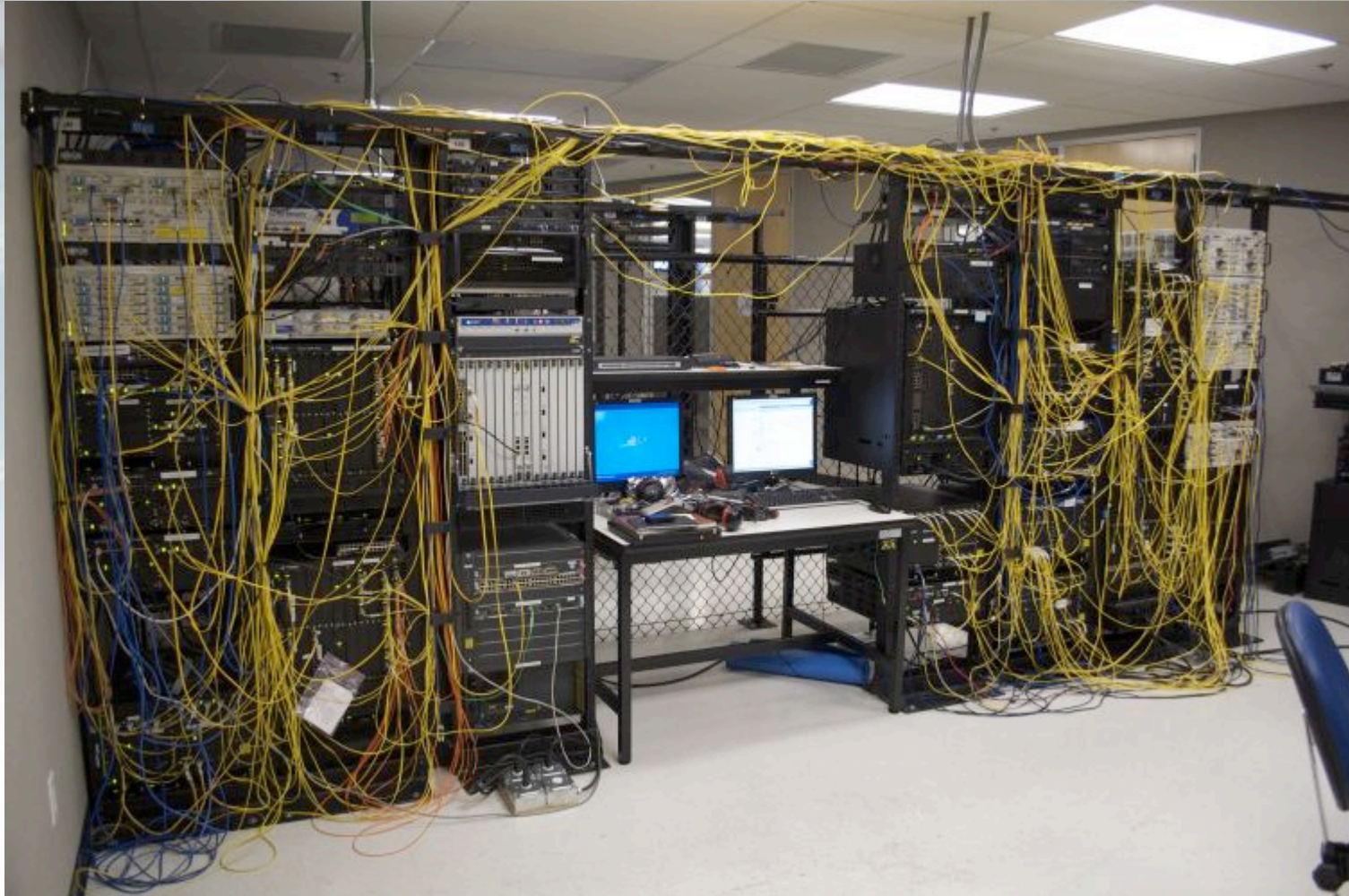
# Agenda

- Look back at 2008
- Current Traffic and Membership status
- New features
- New PoPs

# Review of 2008

- Technical issues of summer now resolved
- Expanded staffing
  - Additional engineering staff
  - New role in Public Affairs, new Sales person
- Continued growth in traffic and members
- Deployment of further new hardware
  - Foundry MLX-32
- Specialist “stress test” scenario lab at Foundry – full facsimile of the platform

# Foundry/LINUX Scenario Lab

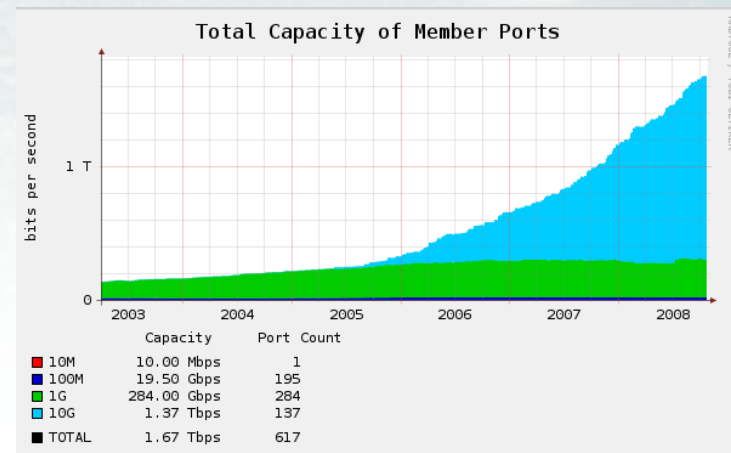
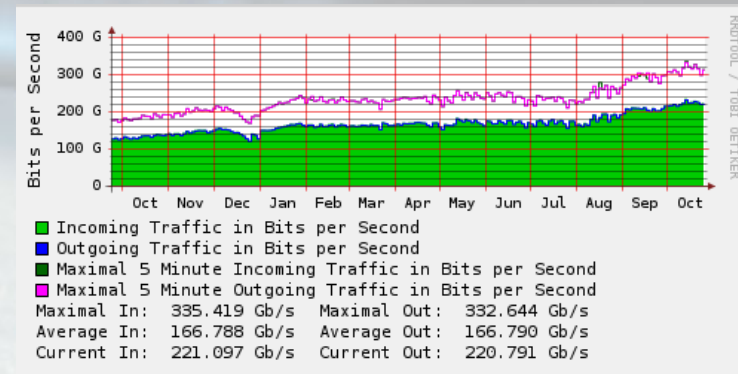


**Engineering**

**LINUX**<sup>™</sup>

# Current Stats

- Approximately 335Gbit/sec peak
- 297 connected members
- 617 connected ports, 137 member 10GE ports
- 1.67Tb/sec attached capacity





# New Features

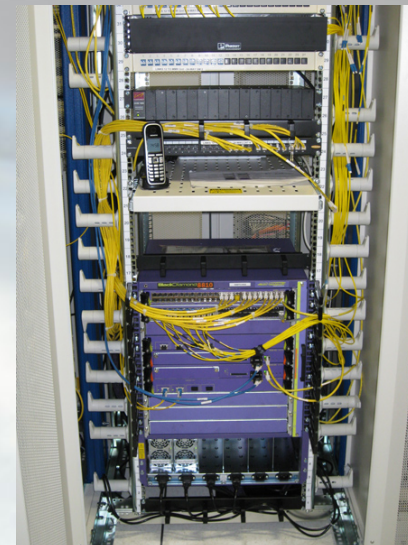
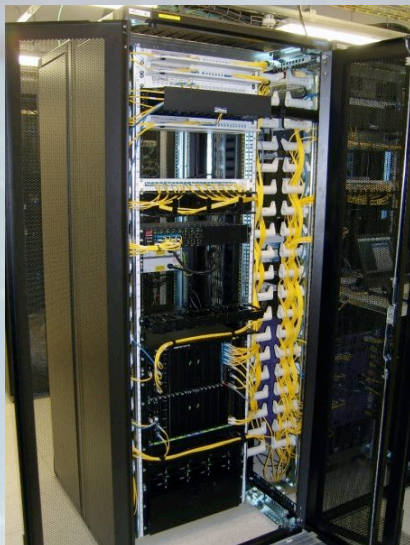
- sFlow
  - Available on Extreme LAN soon
  - New features for members, XML interface
- Managed Intersite Private Interconnect
  - Replaces ad-hoc dark fibre between 4 largest Docklands sites
  - 1G or 10G channels over a LINX operated DWDM system

# New PoPs

- Three new PoPs established
  - Interxion, Brick Lane (City of London)
  - Equinix, LD4, Slough (near Heathrow)
  - Telecity Group, Powergate, Acton (west London)
- Live now: Interxion and Equinix
- Mid-November for Telecity location
- Full LINX PoP, both LANs, proper switches, diverse fibre routing

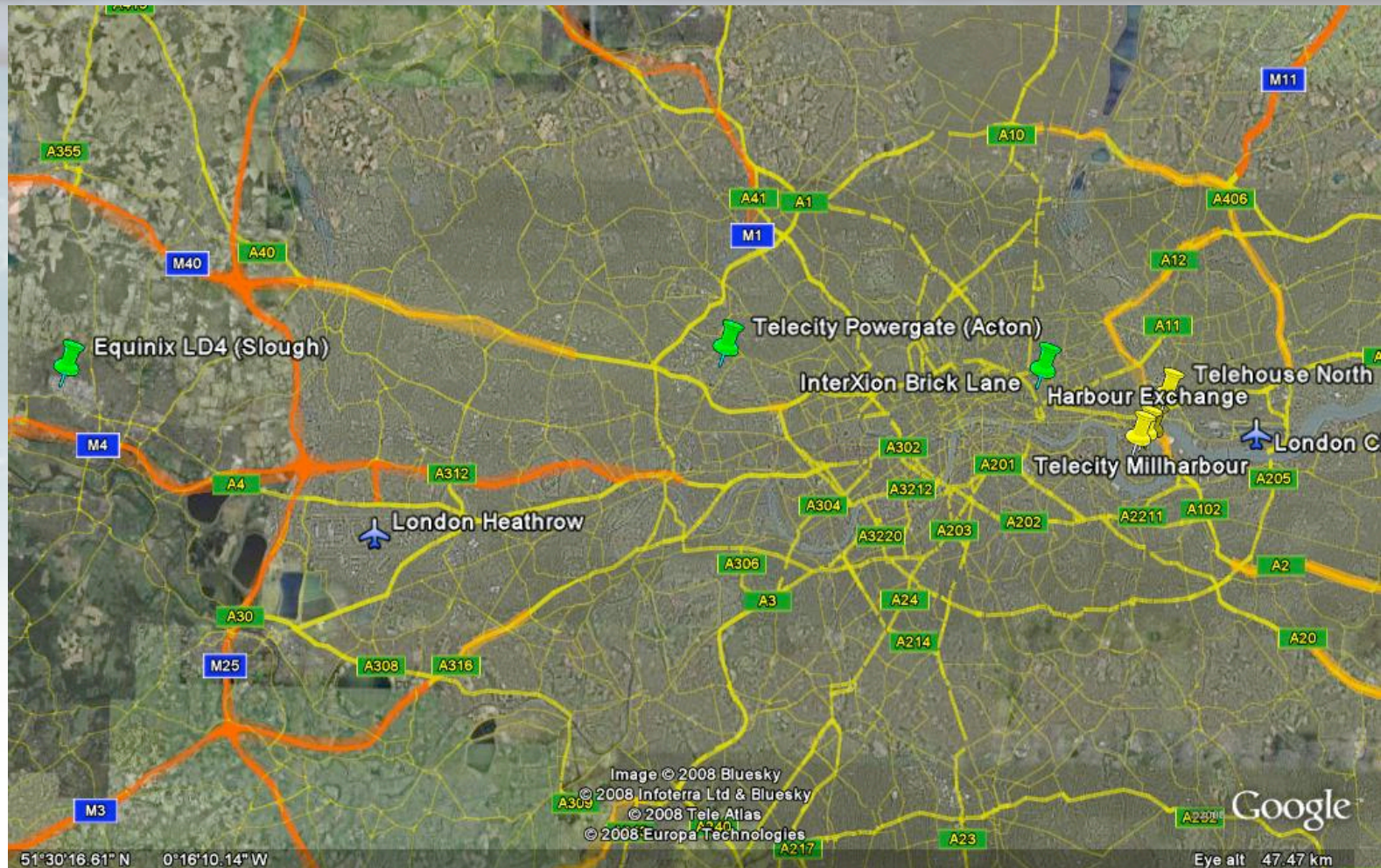
# New PoPs

Complete with pretty cabling...





# New PoP Locations



# Engineering



# New PoP Transmission Capability

- Diverse dark fibre loop running through new locations
- Both platforms share same glass
- Passive 16ch DWDM muxes
  - Expandable to 32 ITU grid waves
- ZRD (40km/80km) XFP optics in switches
- No regen required, but has to be clean

# Good News

- LINX prices frozen for 2009
  - membership fee is £2,250 per annum
  - 100Mb ports: £160/month (2nd port at no charge)
  - 1GigE ports: £445/month on Foundry LAN & £335/month on Extreme LAN
  - 10GigE ports: £1665/month on Foundry LAN & £1250/month on Extreme LAN



# Questions?

John



Jennifer



Richard

Malcolm



...or you could always ask me

**Engineering**

